



**REGIONAL SPECIALISED METEOROLOGICAL CENTRE-TROPICAL CYCLONES, NEW DELHI
TROPICAL WEATHER OUTLOOK**

DEMS-RSMC TROPICAL CYCLONES NEW DELHI DATED 15.06.2021

TROPICAL WEATHER OUTLOOK FOR NORTH INDIAN OCEAN (THE BAY OF BENGAL AND ARABIAN SEA) VALID FOR NEXT 120 HOURS ISSUED AT 0600 UTC OF 15.06.2021 BASED ON 0300 UTC OF 15.06.2021.

BAY OF BENGAL:

YESTERDAY'S LOW PRESSURE ARE OVER SOUTH JHARKHAND & NEIGHBOURHOOD NOW LIES OVER EAST UTTAR PRADESH AND ADJOINING BIHAR WITH ASSOCIATED CYCLONIC CIRCULATION EXTENDING UPTO MID TROPOSPHERIC LEVELS .

SCATTERED LOW AND MEDIUM CLOUDS WITH EMBEDDED INTENSE TO VERY INTENSE CONVECTION LAY OVER NORTHWEST & CENTRAL BIHAR ,NORTHEAST ODISHA ,SOUTH GANGETIC WEST BENGAL AND MODERATE TO INTENSE CONVECTION LAY OVER CHHATTISGARH ,JHARKHAND, REST GANGETIC WEST BENGAL & NEIGHBOURHOOD IN ASSOCIATION WITH LOW PRESSURE AREA (LPA) OVER THE REGION.

SCATTERED TO BROKEN LOW AND MEDIUM CLOUDS WITH EMBEDDED INTENSE TO VERY INTENSE CONVECTION LAY OVER NORTH & EASTCENTRAL BAY OF BENGAL AND NORTH ANDAMAN SEA. SCATTERED LOW AND MEDIUM CLOUDS WITH EMBEDDED MODERATE TO INTENSE CONVENTION LAY OVER CENTRAL BAY OF BENGAL AND SOUTH ANDAMAN SEA.

PROBABILITY OF CYCLOGENESIS (FORMATION OF DEPRESSION) DURING NEXT 120 HRS):

24 HOURS	24-48 HOURS	48-72 HOURS	72-96 HOURS	96-120 HOURS
NIL	NIL	NIL	NIL	NIL

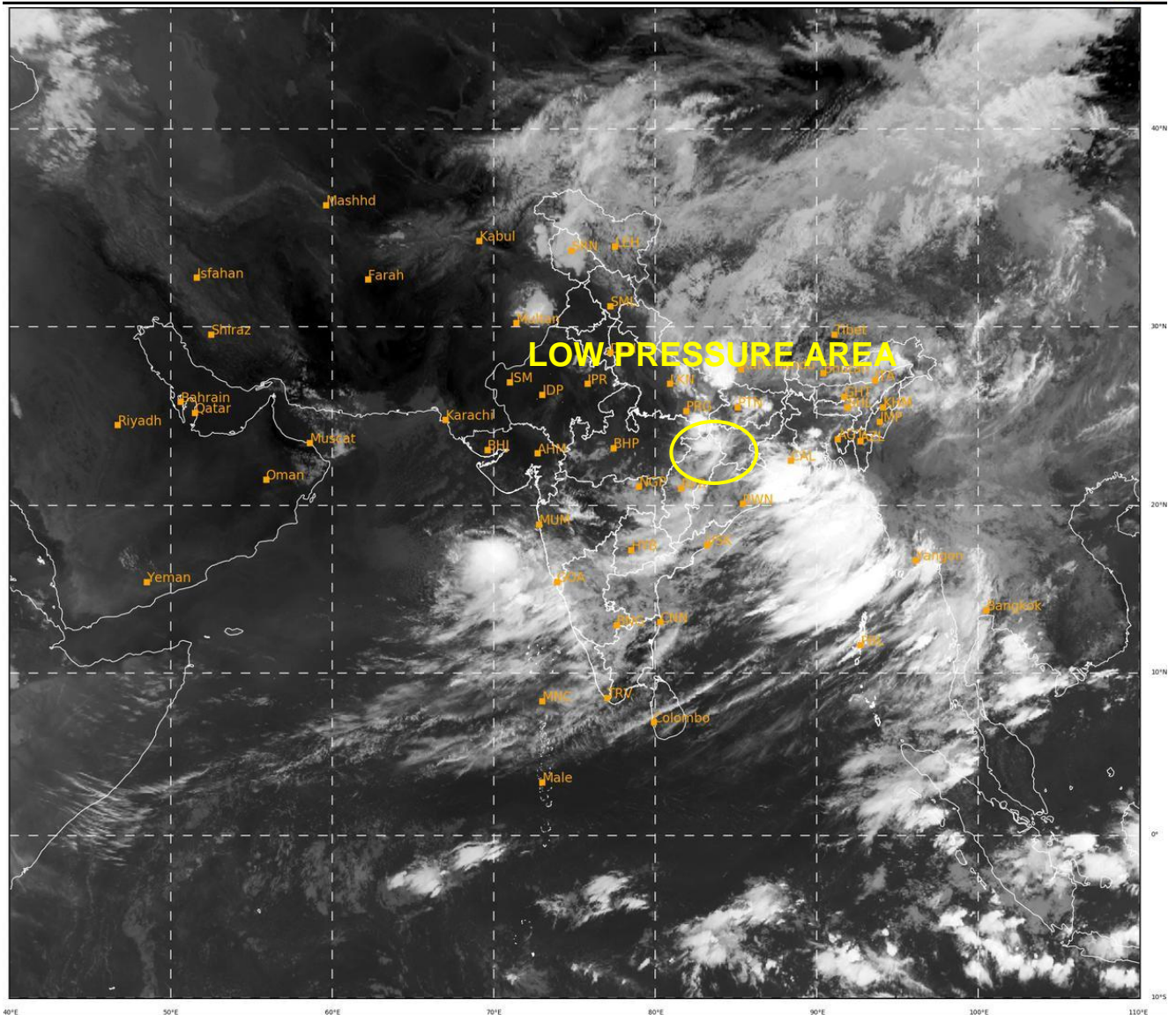
ARABIAN SEA:

SCATTERED LOW AND MEDIUM CLOUDS WITH EMBEDDED INTENSE TO VERY INTENSE CONVECTION LAY OVER EASTCENTRAL ARABIAN SEA. SCATTERED LOW AND MEDIUM CLOUDS WITH EMBEDDED MODERATE TO INTENSE CONVENTION LAY OVER SOUTHEAST ARABIAN SEA AND COMORIN REGION.

PROBABILITY OF CYCLOGENESIS (FORMATION OF DEPRESSION) DURING NEXT 120 HRS):

24 HOURS	24-48 HOURS	48-72 HOURS	72-96 HOURS	96-120 HOURS
NIL	NIL	NIL	NIL	NIL

REMARKS: NIL



395

934

IMD, DELHI